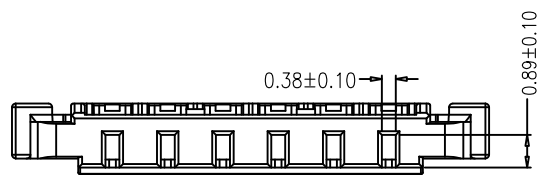
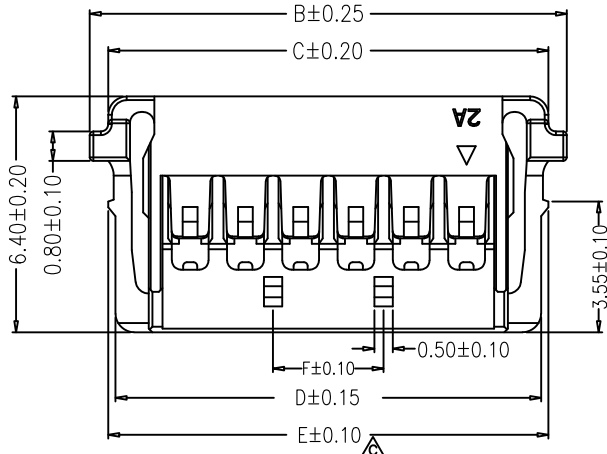


2P~4P



■ Specifications(规格):

- Voltage rating(额定电压): 150V AC / DC
- Current rating(额定电流): 3A AC / DC
- Withstanding voltage(耐压值): 500V AC/minute
- Temperature range(工作温度): -25°C~+85°C
- Insulation resistance(绝缘电阻): ≥1000MΩ
- Contact resistance(接触电阻): ≤20mΩ
- After environmental testing(环境测试后): ≤40mΩ

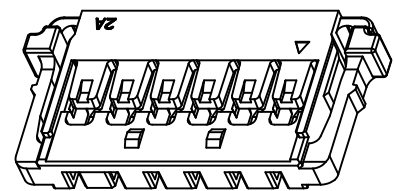
Material:

Insulator: PA66 UL 94V-0  
Color: Natural or Black

E1503H00-NPX-XX-XX

- ① ② ③④⑤ ⑥

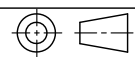
- ① Series No.
- ② H90 : Side Contact  
H00 : Up Contact
- ③ No. of Circuits
- ④ X : Product color(A--Y)  
Blank: Natural type
- ⑤ HF : Halogen Free  
Blank: Rohs
- ⑥ NK: No Mark  
Blank: Mark

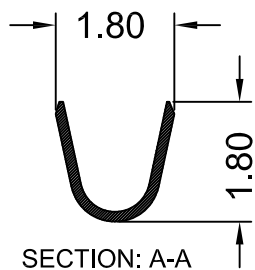
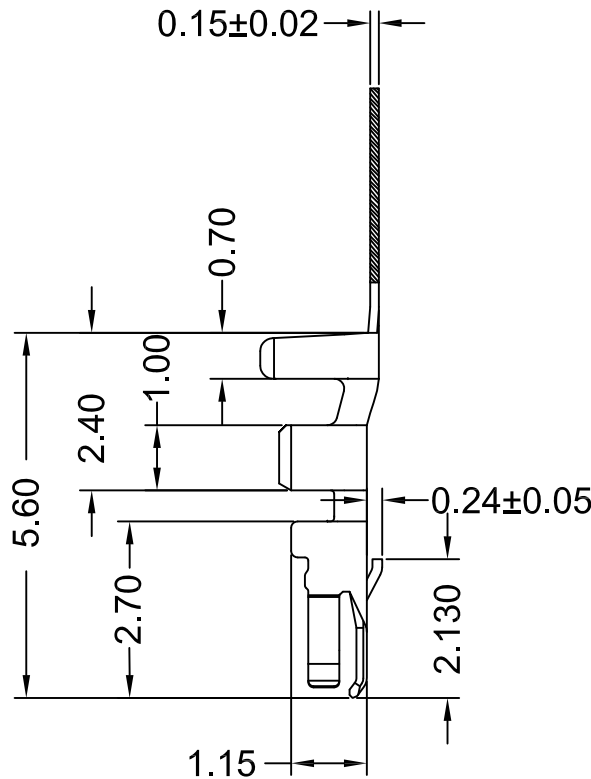
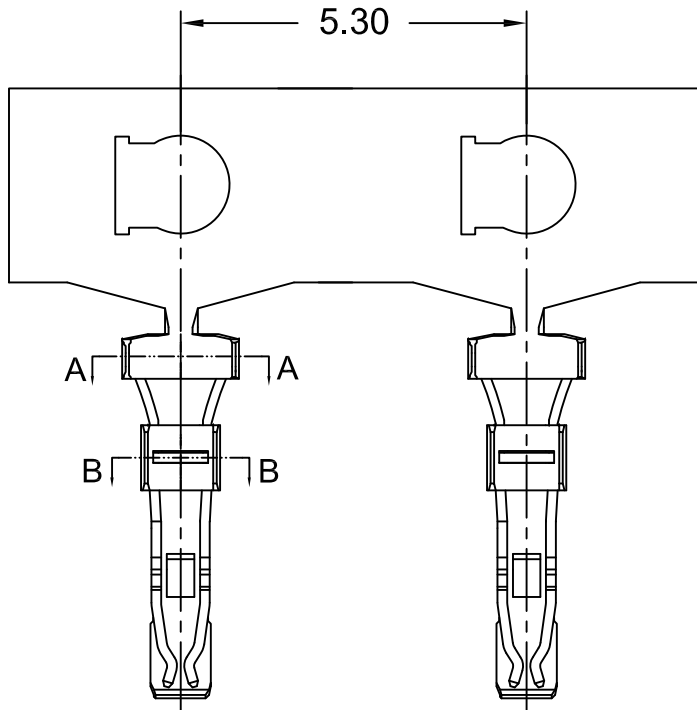


Poles	Dimensions(mm)					
	A	B	C	D	E	F
02	1.50	6.95	5.95	5.55	5.85	
03	3.00	8.45	7.45	7.05	7.35	
04	4.50	9.95	8.95	8.55	8.85	
05	6.00	11.45	10.45	10.05	10.35	3.00
06	7.50	12.95	11.95	11.55	11.85	3.00
07	9.00	14.45	13.45	13.05	13.35	4.50
08	10.50	15.95	14.95	14.55	14.85	6.00
09	12.00	17.45	16.45	16.05	16.35	7.50
10	13.50	18.95	17.95	17.55	17.85	9.00
11	15.00	20.45	19.45	19.05	19.35	10.50
12	16.50	21.95	20.95	20.55	20.85	12.00

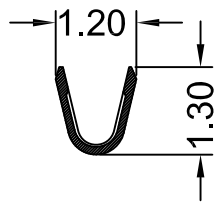
				GENERAL TOLERANCE		UNIT: mm		DATE		TITLE:				
				.X±0.30	X°±1°	DRAWN:	Andyliu	2019.08.23		Pitch1.50mm Housing				
				.XX±0.20	.X°±	CHECKED:				PROJECT				
				.XXX±0.10	.XX°±	APPROVED:				PART NO.		E1503H00-NPX-XX-XX		
LTR	NAME	DATE	VERISION RECORD							VER.	SCALE:	N/A	DRAWING NO.	
1	2	3	4	5	6	7	8	9	A0	SHEET:	1/1	E1503H		

东莞市宏欣蓝电子有限公司

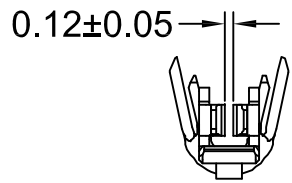




SECTION: A-A  
SCALE: 1:1



SECTION: B-B  
SCALE: 1:1



■ Specifications(规格):

- Voltage rating(额定电压): 150V AC / DC
- Current rating(额定电流): 3A AC / DC
- Withstanding voltage(耐压值): 500V AC/minute
- Temperature range(工作温度): -25°C~+85°C
- Insulation resistance(绝缘电阻): ≥1000MΩ
- Contact resistance(接触电阻): ≤20mΩ
- After environmental testing(环境测试后): ≤40mΩ

E1503 T 0 P-XX-XX  
① ②③④ ⑤ ⑥

- ① Series No.
- ② T: Terminal
- ③ 9 : Side Contact  
0 : Up Contact
- ④ P : Phosphor Bronze
- ⑤ 2E : Tin-plated  
5A : Gold-flash
- ⑥ NK : No Mark  
Blank : Mark

Specifications & Ordering Information:

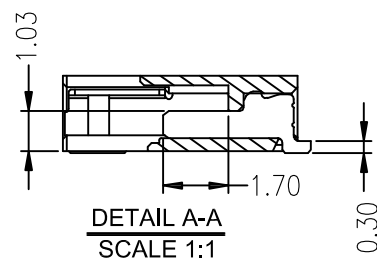
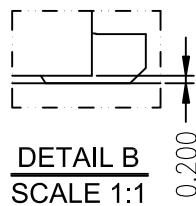
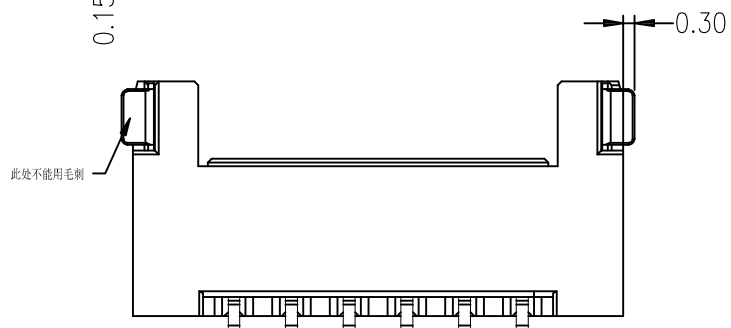
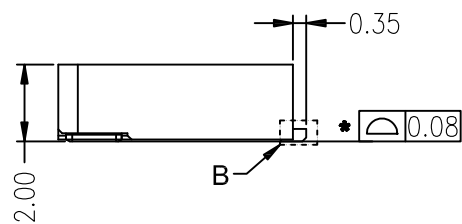
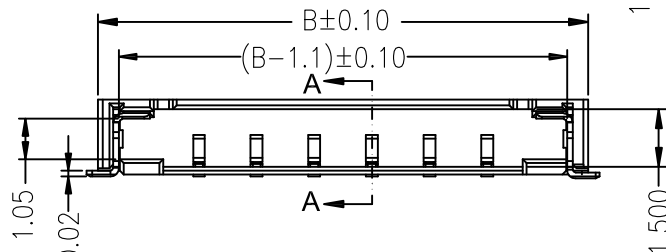
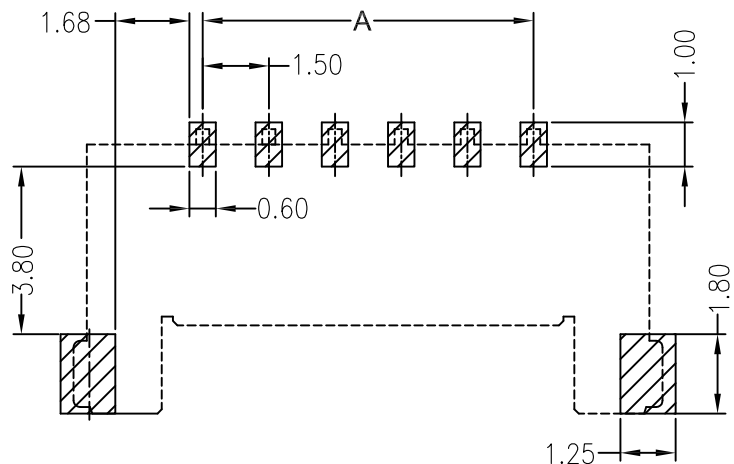
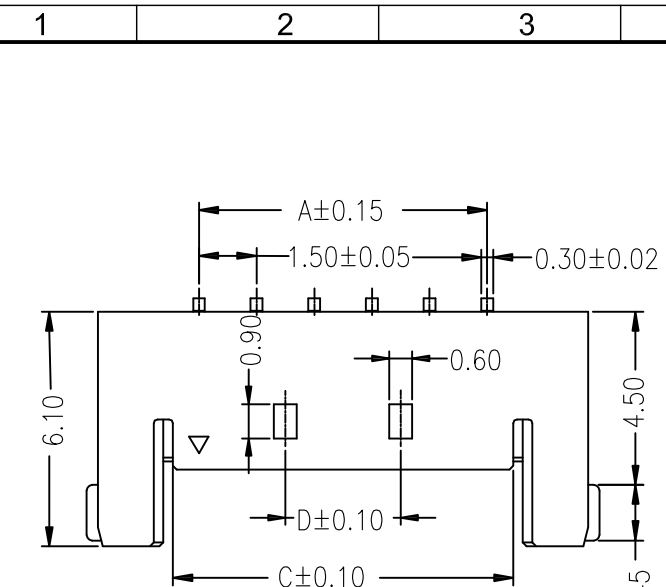
Part No.	Wire Range	Insulation O.D.	Material	Finish	Qty/Reel
E1503T0P-5A-NK	AWG #24-28	1.10mm(max)	Phosphor Bronze	Gold-plated镀全金	10000PCS
E1503T0P-2E-NK	AWG #24-28	1.10mm(max)	Phosphor Bronze	Tin-plated先冲后镀	10000PCS

LTR	NAME	DATE	VERSION RECORD
1			
2			
3			

GENERAL TOLERANCE		UNIT: mm		DATE	
.X ± 0.30	X° ± 1°	DRAWN:	Andyliu	2019.05.11	
.XX ± 0.20	.X° ±	CHECKED:			
.XXX ± 0.10	.XX° ±	APPROVED:			

TITLE:		
1.50mm Crimp Style Connectors		
VER.	SCALE:	N/A
A0	SHEET:	1/1

<b>东莞市宏欣蓝电子有限公司</b>		
PROJECT	PART NO.	E1503T0P-XX-XX
DRAWING NO.		E1503T



**Specifications(规格):**

- Voltage rating(额定电压): 150V AC / DC
- Current rating(额定电流): 3A AC / DC
- Withstanding voltage(耐压值): 500V AC/minute
- Temperature range(工作温度): -25°C~+85°C
- Insulation resistance(绝缘电阻):  $\geq 1000M\Omega$
- Contact resistance(接触电阻):  $\leq 20m\Omega$
- After environmental testing(环境测试后):  $\leq 40m\Omega$

**Material:**

Insulator: PA4T UL 94V-0  
 Pin: Phorphos bronze Gold-flash  
 Solder Tabs: Brass Tin Plated

**Ordering code:**

E1503W90-NP-S X X X XX  
 ①②③④

- ① N=Halogen Free R=RoHS
- ② Material: 4=PA4T L=LCP
- ③ Color: B=Black E=Beige
- ④ Plating code: T1=Tin plated

G1=Gold-flash

Poles	Dimensions(mm)			
	A	B	C	D
02	1.50	6.75	2.85	
03	3.00	8.25	4.35	
04	4.50	9.75	5.85	
05	6.00	11.25	7.35	3.00
06	7.50	12.75	8.85	3.00
07	9.00	14.25	10.35	4.50
08	10.50	15.75	11.85	6.00
09	12.00	17.25	13.35	7.50
10	13.50	18.75	14.85	9.00
11	15.00	20.25	16.35	10.50
12	16.50	21.75	17.85	12.00

			GENERAL TOLERANCE		UNIT: mm		DATE		TITLE:		
			.X ± 0.30	X° ± 1°	DRAWN: Andyliu		2020.02.16		Pitch1.50mm Wafer		
			.XX ± 0.20	.X° ±	CHECKED:				PROJECT		
			.XXX ± 0.10	.XX° ±	APPROVED:				PART NO.		E1503W90-NP-SXXXXX
LTR	NAME	DATE	VERISION RECORD						VER.		SCALE: N/A
								A0		SHEET: 1/1	
									DRAWING NO.		E1503W

东莞市宏欣蓝电子有限公司

PROJECT PART NO. E1503W90-NP-SXXXXX

DRAWING NO. E1503W