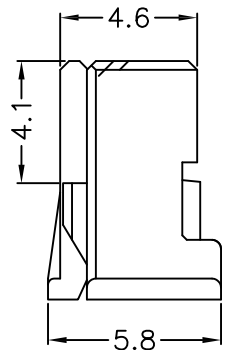
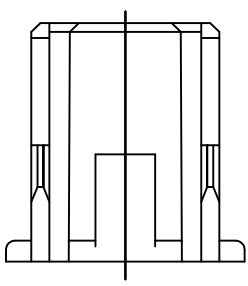
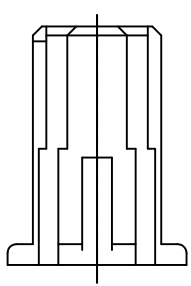
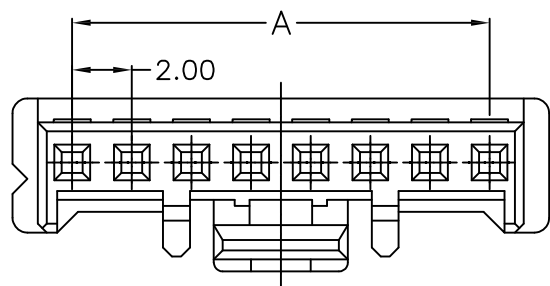
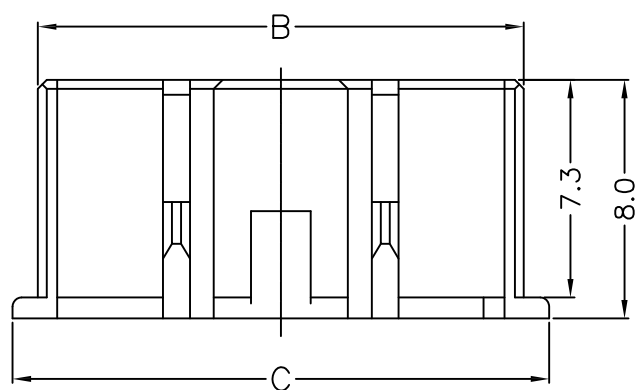


ROSH+HF



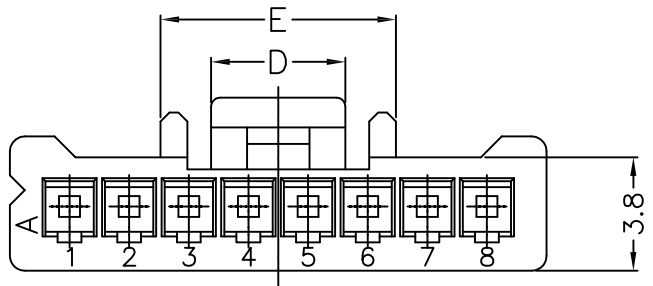
- ◆ SPECIFICATIONS
- Current rating: 3A AC, DC
 - Voltage rating: 250V AC, DC
 - Temperature range: -25°C ~ +85°C
 - Insulation resistance: ≥1000MΩ .
 - Withstanding voltage: 800V AC/ minute.
 - Contact resistance: ≤20mΩ .
 - After environmental testing: ≤20MΩ .
 - Material: Nylon66, UL94V-0
 - Color: Natural(White)
 - Mates with E2002 Series terminal



E2002 H00 - NP - L - HF-NK
① ② ③ ④ ⑤ ⑥

- ① Series No.
- ② H90: Side Contact
H00: UP Contact
- ③ NO. of Circuits
- ④ L: Mount type
- ⑤ HF: Halogen Free
- ⑥ NK: No Mark
Blank: Mark

Circuits	Dimensions				
	A	B	C	D	E
2	2.00	4.30	6.00	2.60	4.40
3	4.00	6.30	8.00	3.80	6.40
4	6.00	8.30	10.00	4.50	8.40
5	8.00	10.30	12.00	4.50	7.90
6	10.00	12.30	14.00	4.50	7.90
7	12.00	14.30	16.00	4.50	7.90
8	14.00	16.30	18.00	4.50	7.90
9	16.00	18.30	20.00	4.50	7.90
10	18.00	20.30	22.00	11.00	14.50
11	20.00	22.30	24.00	11.00	14.50
12	22.00	24.30	26.00	11.00	14.50
13	24.00	26.30	28.00	11.00	14.50
14	26.00	28.30	30.00	11.00	14.50
15	28.00	30.30	32.00	11.00	14.50

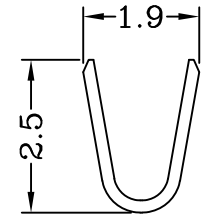
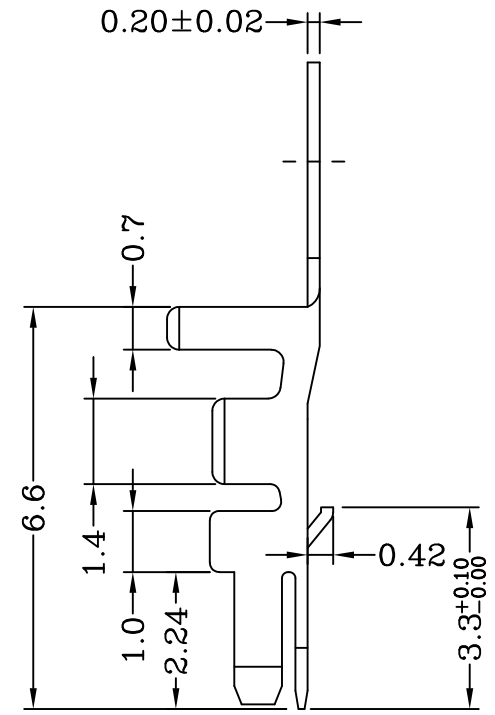
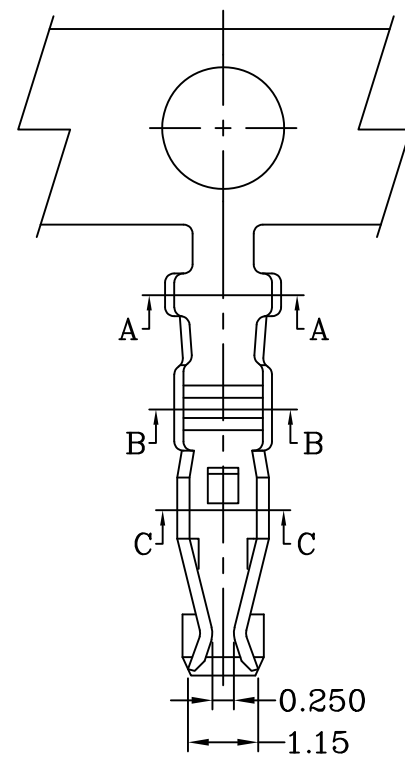


△				GENERAL TOLERANCE		UNIT: mm		DATE		TITLE: JST PA 2.00mm 单排带扣 HouSing 东莞市宏欣蓝电子有限公司			
△				.X±0.25	X°±1°	DRAWN:	朱佑武	2013.1.2					
△				.XX±0.15	.X°±	CHECKED:	张自豪	2013.1.2	PROJECT		PART NO.	E2002H00-NP-L-HF-XX	
△				.XXX±0.10	.XX°±	APPROVED:	张自豪	2013.1.2	VER.	SCALE:	N/A	DRAWING NO.	E2002H
LTR	NAME	DATE	VERSION RECORD						A	SHEET:	1/1		

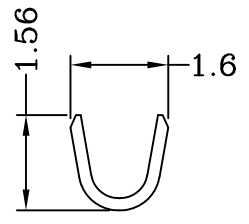
由 Autodesk 教育版产品制作

由 Autodesk 教育版产品制作

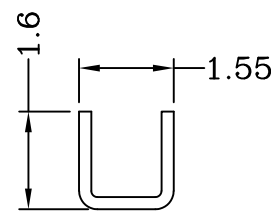
- ◆ SPECIFICATIONS
- Current rating: 3A AC, DC
 - Voltage rating: 250V AC, DC
 - Temperature range: -25°C ~ +85°C
 - Insulation resistance: ≥1000MΩ .
 - Withstanding voltage: 800V AC/ minute.
 - Contact resistance: ≤20mΩ .
 - After environmental testing: ≤20MΩ .
 - Mates with E2002 Series housing



Section A-A



Section B-B



Section C-C

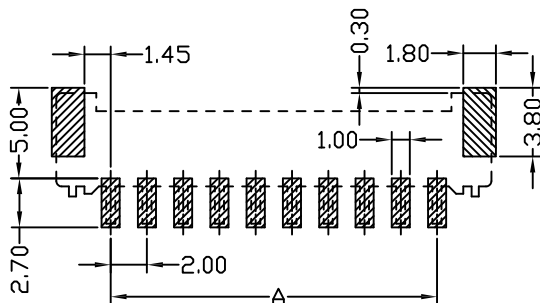
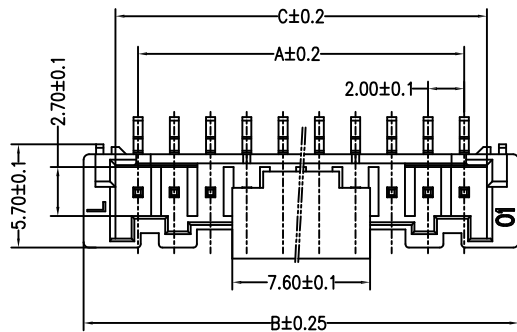
Specifications & Ordering Information:

Part No.	Wire Range	Insulation O.D.	Material	Finish	Qty/reel
E2002T0P-2E-NK	AWG #24~#28	1.60mm(max)	Phosphor bronze	Tin-plated	12,000 PCS

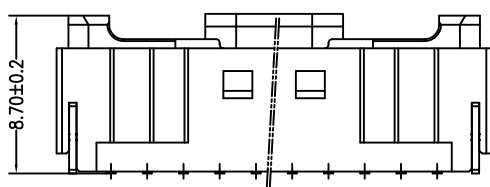
F	△		GENERAL TOLERANCE		UNIT: mm		DATE		TITLE: JST PHD 2.00mm Terminal			东莞市宏欣蓝电子有限公司		
	△		.X±0.25	X°±1°	DRAWN: 朱佑武		2013.3.19							
	△		.XX±0.15	.X°±	CHECKED: 张自豪		2013.3.19		PROJECT		PART NO.		E2002T0P-XX-NK	
	△		.XXX±0.08	.XX°±	APPROVED: 张自豪		2013.3.19		VER. A		SCALE: N/A		DRAWING NO. E2002T	
LTR		NAME	DATE	VERSION RECORD										

由 AUTODESK 学生版生成

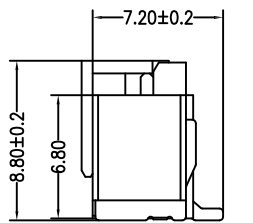
由 AUTODESK 学生版生成



PCB LAYOUT



Schematic Diagram of 10, 11, 12, 13, 14, 15-Hole



0.1

◆ SPECIFICATIONS

- Current rating: 3A AC, DC
- Voltage rating: 250V AC, DC
- Temperature range: -25°C ~ +85°C
- Insulation resistance: ≥1000MΩ
- Withstanding voltage: 800V AC/ minute
- Contact resistance: ≤20mΩ
- After environmental testing: ≤20mΩ

Material:

Insulator: Nylon 6T 94V-0

Contact: Brass

Solder Tabs: Brass

Plating: Tin plated over Nickel

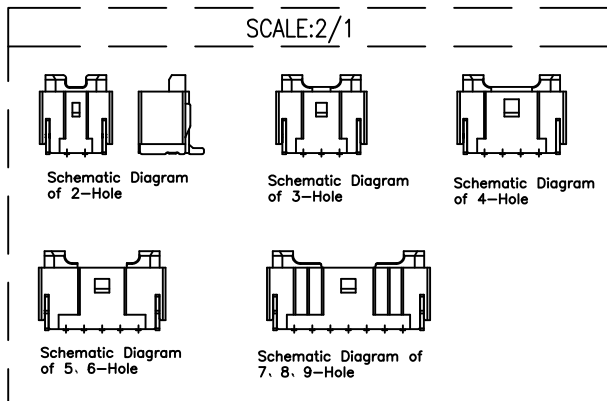
Mates with E2002 Series Housing

PIN.	DIM A	DIM B	DIM C
2pin	2.00	8.00	4.55
3pin	4.00	10.00	6.55
4pin	6.00	12.00	8.55
5pin	8.00	14.00	10.55
6pin	10.00	16.00	12.55
7pin	12.00	18.00	14.55
8pin	14.00	20.00	16.55
9pin	16.00	22.00	18.55
10pin	18.00	24.00	20.55
11pin	20.00	26.00	22.55
12pin	22.00	28.00	24.55
13pin	24.00	30.00	26.55
14pin	26.00	32.00	28.55
15pin	28.00	34.00	30.55

Ordering code:

E2002W00-NP-S X X X XX -L
①②③④⑤

- ① N=Halogen Free R=RoHS
- ② Material: 6=Nylon 6T L=LCP
- ③ Color: B=Black E=Beige
- ④ Plating code: T1=Tin plated
G1=Gold-flash
- ⑤ L: Lock Type



④	③	②	①	GENERAL TOLERANCE	UNIT: mm	DATE	TITLE:
				.X ± 0.30	X° ± 1°	DRAWN: 朱佑武	PA2.0mm SMT 180° Wafer
				.XX ± 0.20	.X° ±	CHECKED: 张自豪	VER. SCALE: N/A
				.XXX ± 0.10	.XX° ±	APPROVED: 张自豪	A SHEET: 1/1
LTR	NAME	DATE	VERSION RECORD				

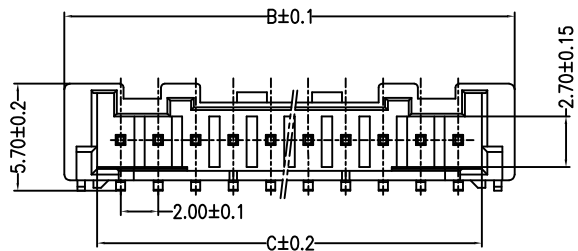
东莞市宏欣蓝电子有限公司

PROJECTION PART NO. E2002W00-NP-SXXXXX-L

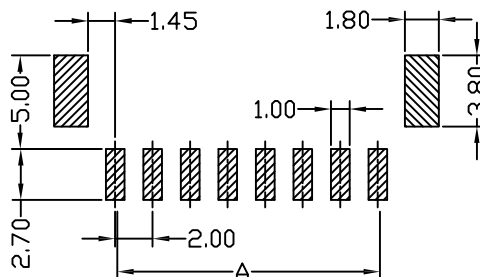
DRAWING NO. E2002W00-SL

1 2 3 4 5 6 7 8 9

A



PCB LAYOUT



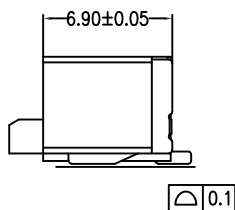
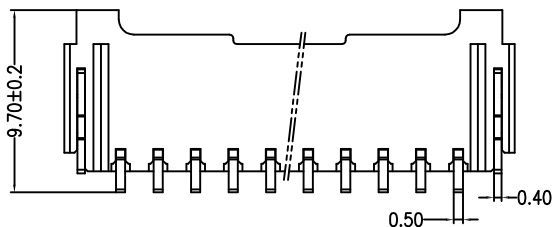
◆ SPECIFICATIONS

- Current rating: 3A AC, DC
- Voltage rating: 250V AC, DC
- Temperature range: -25°C ~ +85°C
- Insulation resistance: ≥1000MΩ
- Withstanding voltage: 800V AC/ minute
- Contact resistance: ≤20mΩ
- After environmental testing: ≤20mΩ

Material:

Insulator: Nylon 6T 94V-0
 Contact: Brass
 Solder Tabs: Brass
 Plating: Tin plated over Nickel
 Mates with E2002 Series Housing

B

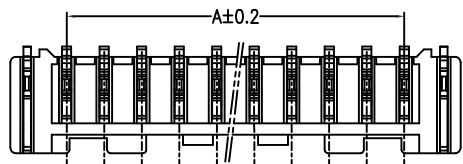


Ordering code:

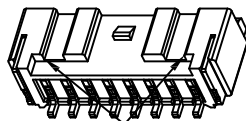
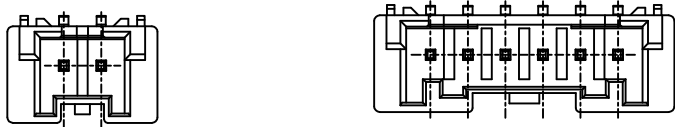
E2002W90-NP-S X X X XX -L
 ①②③④⑤

- ① N=Halogen Free R=RoHS
- ② Material: 6=Nylon 6T L=LCP 9=Nylon 9T
- ③ Color: B=Black E=Beige
- ④ Plating code: T1=Tin plated
G1=Gold-flash
- ⑤ L: Lock Type

C



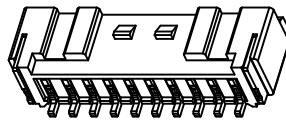
D



注：六孔及以下无此槽

Poles	Dimensions (mm)			Poles	Dimensions (mm)		
	A	B	C		A	B	C
02	2.00	8.00	4.55	10	18.00	24.00	20.55
03	4.00	10.00	6.55	11	20.00	26.00	22.55
04	6.00	12.00	8.55	12	22.00	28.00	24.55
05	8.00	14.00	10.55	13	24.00	30.00	26.55
06	10.00	16.00	12.55	14	26.00	32.00	28.55
07	12.00	18.00	14.55	15	28.00	34.00	30.55
08	14.00	20.00	16.55	16	30.00	36.00	32.55
09	16.00	22.00	18.55				

E



注：十孔及以上双卡扣

F

④				GENERAL TOLERANCE		UNIT: mm	DATE	TITLE: PA2.0mm SMT 90° Wafer			东莞市宏欣蓝电子有限公司			
③				X. ±0.5	X° ±5°	DRAWN: 朱佑武	2013.1.2							
②				.X ±0.3	.X° ±2°	CHECKED: 张自豪	2013.1.2	PROJECT		PART NO.		E2002W90-NP-SXXXXX-L		
①				.XX ±0.25	.XX° ±1°	APPROVED: 张自豪	2013.1.2	VER.	SCALE:	N/A	DRAWING NO.		E2002W90-SL	
LTR	NAME	DATE	VERSION RECORD					A	SHEET:	1/1				
1	2	3	4	5	6	7	8	9						