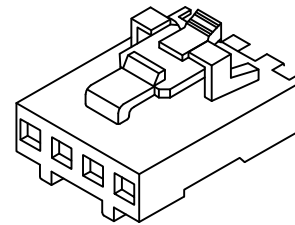
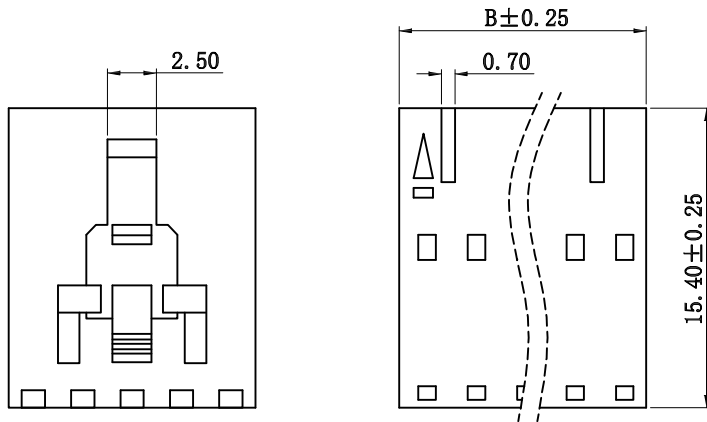


Specifications:

Rated Voltage : 250V AC/DC  
 Rated Current : 2.5A AC,DC  
 Withstand Voltage : 1500V AC/minute  
 Contact Resistance : 20mΩ(MAX.)  
 Insulation Resistance : 1000MΩ(MIN.)  
 Temperature Range : -25°C~+85°C  
 Suitable E2547 series Terminal

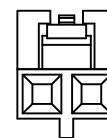
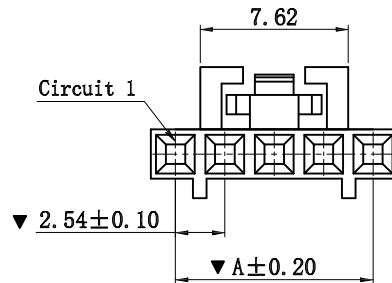
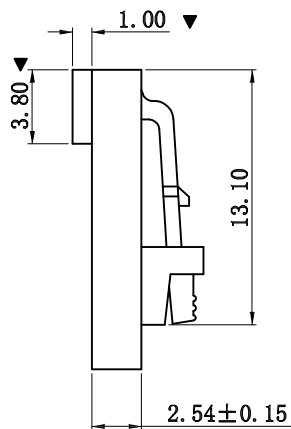


E2547H00-NPX-HF-NK

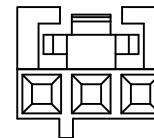
① ② ③④⑤ ⑥

- ① Series No.
- ② H90 : Side Contact  
H00 : Up Contact
- ③ No. of Circuits
- ④ X : Product color(A--Y)  
Blank: Natural type
- ⑤ HF : Halogen Free
- ⑥ NK: No Mark  
Blank: Mark

Circuits Part No	Dimensions	
	A	B
2P	2.54	5.08
3P	5.08	7.62
4P	7.62	10.16
5P	10.16	12.70
6P	12.70	15.24
7P	15.24	17.78
8P	17.78	20.32
9P	20.32	22.86
10P	22.86	25.40
11P	25.40	27.94
12P	27.94	30.48
13P	30.48	33.02
14P	33.02	35.56
15P	35.56	38.10
16P	38.10	40.64
17P	40.64	43.18
18P	43.18	45.72
19P	45.72	48.26
20P	48.26	50.80



02P



03P

LATCH AND POLARIZATION  
RIB LOCATION

				GENERAL TOLERANCE		UNIT: mm		DATE		TITLE:				
				.X ± 0.25		X° ± 1°		DRAWN: 张自豪		2015.08.03		MX2.54 Housing		
				.XX ± 0.13		.X° ±		CHECKED:						
				.XXX ± 0.08		.XX° ±		APPROVED: 张彬彬		2015.08.03		VER. SCALE: N/A		
LTR NAME DATE VERISION RECORD										A1 SHEET: 1/1				

东莞市宏欣蓝电子有限公司

PROJECT PART NO. E2547H00-NPX-HF-XX

DRAWING NO. E2547H

由 Autodesk 教育版产品制作

由 Autodesk 教育版产品制作

Specifications:

Rated Voltage : 250V AC/DC

Rated Current : 5A AC,DC

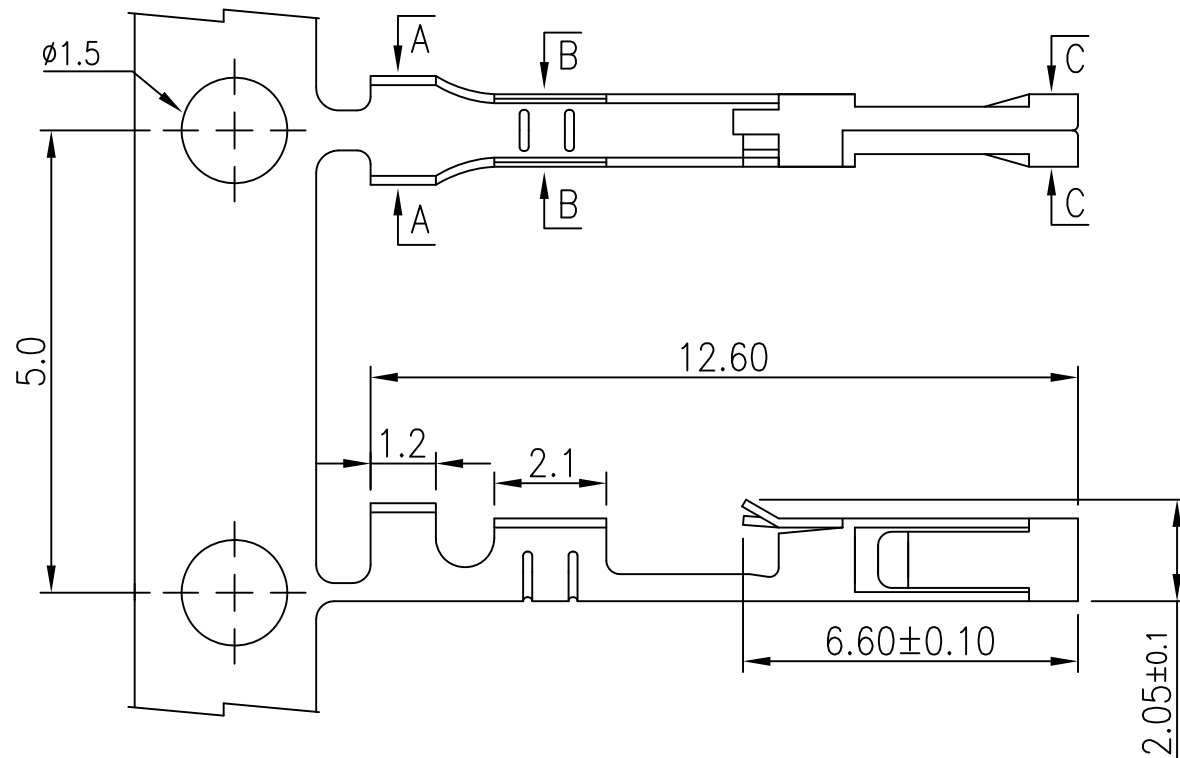
Withstand Voltage : 1500V AC/minute

Contact Resistance : 20mΩ(MAX.)

Insulation Resistance : 1000MΩ(MIN.)

Temperature Range : -25°C~+85°C

Suitable E2547 series Housing



E2547 I 0 P-XX-XX

① ②③④⑤ ⑥

① Series No.

② T: Terminal

③ 9 : Side Contact

0 : Up Contact

④ P : Phosphor Bronze

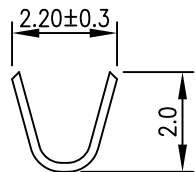
⑤ 2E : Tin-plated 先冲后镀

2 : Tin-plated 先镀后冲

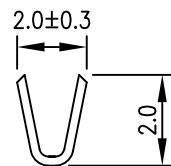
0A : Gold Flash 半金

⑥ NK : No Mark

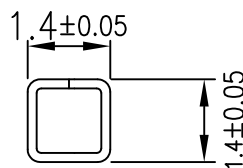
Blank : Mark



Section A-A



Section B-B



Section C-C

Specifications & Ordering Information:

Part No.	Material	Wire Range	Finish	Qyt/Reel
E2547TOP-2-NK	Phosphor Bronze	AWG #24~30	Tin-plated	15000 PCS
E2547TOP-2E-NK	Phosphor Bronze	AWG #24~30	Tin-plated	15000PCS

GENERAL TOLERANCE				UNIT: mm		DATE			TITLE:		
.X ± 0.25		X° ± 1°		DRAWN: 张自豪		2015.07.22			MX2.54 Terminal		
.XX ± 0.13		.X° ±		CHECKED:					PROJECT		
.XXX ± 0.08		.XX° ±		APPROVED: 张彬彬		2015.07.22			PART NO.		E2547TOP-XX-NK
LTR	NAME	DATE	VERSION RECORD			VER.		SCALE:	N/A	DRAWING NO.	
1	2	3	4			A1		SHEET:	1/1	E2547T	

东莞市宏欣蓝电子有限公司

